

Woodlands Raynes Park, SW20 9JF

£950,000 Freehold



SUBSTANTIAL SEMI-DETACHED 1930s BLAY HOME ON AN EXCEPTIONAL PLOT WITH SIGNIFICANT POTENTIAL TO EXTEND (STPP).

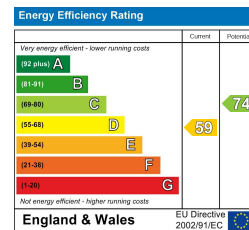
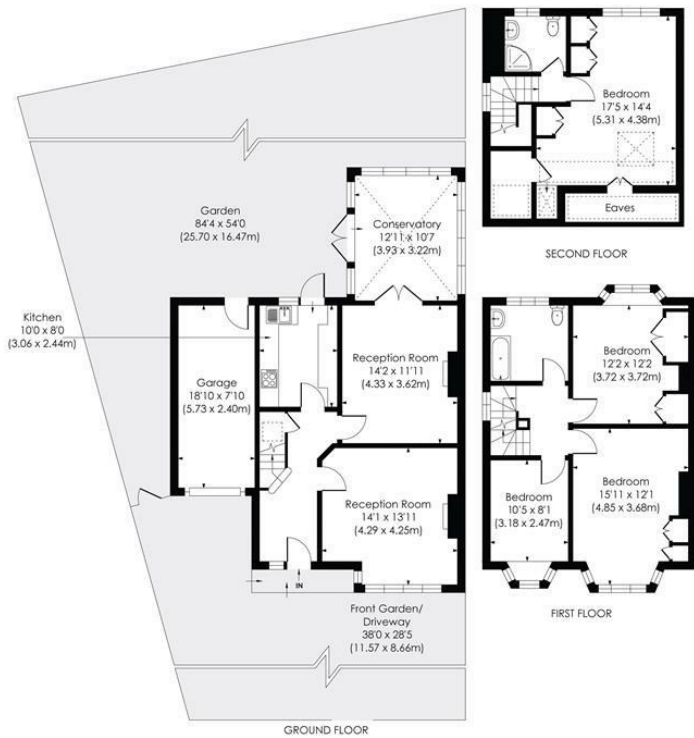
A rare opportunity to acquire a charming chain-free four double bedroom, two bathroom semi-detached 1930s Blay home set on an exceptionally generous plot within a tranquil cul-de-sac in Raynes Park. Recently refreshed and offering immediate occupancy, the spacious property provides outstanding scope to extend (STPP) and create a substantial long-term family home.

WOODLANDS, SW20

Approx. Gross Internal Floor Area

1814 Sq. ft/168.52 Sq. m (Incl. RHH, Incl. Garage)

1713 Sq. ft/159.17 Sq. m (Excl. RHH, Incl. Garage)



© Pixangle Property Marketing Ltd. info@pixangle.com Tel: 0208 870 2118
 This floor plan has been prepared for the purpose of illustration only in accordance with the latest RICS code of measuring practice and is not to scale. All measurements and areas are approximate and whilst every effort has been made to ensure the accuracy of the plan contained here, no responsibility is taken for any error, omission or misstatement.



- 1,814 sqft - Four Double Bedroom - Two Bathroom
- 1930's Semi-Detached Blay House With Envidable Plot
- Substantial Potential To Further Extend S.T.P.P
- Neutrally Decorated Throughout
- Highly Sought After Cul-De-Sac Location
- Easy Access To Raynes Park Station And High Street
- Moments From Cannon Hill Common
- No Onward Chain
- EPC - D
- Council Tax Band - E

For Free Mortgage Quote and Best Mortgage Rates, call Ellisons Mortgage Advisor on 0208 944 9595



Although these particulars are believed to be correct, their accuracy is not guaranteed and they do not form part of any contract.

Celebrating 30 years of successful Sales and Lettings in Merton

